



Ore-Cutts

Volume XLVV Number 7

July 2013



Please join us on **July 9, 2013 at 9:00 am at 7:00 pm at the Luis Oasis Senior Center, 420 Soares Ave. in Old Orcutt for a Program by Elaine Von Achen, Margaret Henson and Bob**

Bullock with slide shows of their favorite Field Trips.

- **The Display is Wayne Mill's Annual 1 foot by 1 foot Display Competition. You can display anything, anyway as long as its footprint fits into a 12 inch by 12 inch spot. Who knows, there might even be a prize. But as always, you are welcome to bring any rocks/minerals that you would like to share. (Remember, those who display receive an extra doorprize ticket.)**
- **The refreshments will be cakes brought to us by: Sylvia Nasholm, Joe & Lisa Azevedo, Bonnie Ward, and Elaine Von Achen.**

The Prez Box—May 2013

Wayne Mills, OMS president

Half way through the year already—amazing how fast it went! Our next big event is our gem show on the first weekend in August. And to make it a good one, we will all have to pull together to “get ‘er done”. Please consider putting in a display (the club has about 20 cases to loan out,) and I know that several of you all have some really neat rocks to share. Please contact Elaine Von Achen to reserve a case.

We will have sign-up sheets at our July meeting to help with the various show activities, please

think of an activity that you would enjoy helping with, and help with it as much as possible. Please let us know your choice at the July meeting, and PLEASE show up for the hours you are scheduled to work. Some of these areas are: Set-up and take down, Kitchen, Treasure Chest, Saturday Barbecue, Hospitality and Kids Activities.

On June 27th, I had the opportunity to talk to several groups of Girl Scouts at their “Night at the Museum” day camp in Atascadero’s Heilmann Park. We had 6 groups of up to 20 girls each visit the “Gem Station” for a 35 minute talk. The girls ranged in age from about 8-11. It was an exhausting, but enjoyable day. We did manage to get our show flyers out to the girl’s leaders to take back to their troops.



According to our President-elect and Program Chair, Sharon Duncan, the program for our July meeting will feature Elaine Von Achen, Margaret Henson and Bob Bullock describing and showing slides of some of their favorite field trips.

Speaking of field trips, our June Semi-annual meeting at the Porter Ranch was quite a success. It

seems like we almost had more members at the event than come to our regular meetings. After the good food and conversation, we hit the large rock pile in front of the ranch to look for rock treasures. Below, Wes Lingerfelt and Debbie Hood are hard at it.



Coming up on July 13, we have our next highway clean-up (under Caltrans Adopt-A-Highway Program.) It would be really great to see some new faces out there on the highway (well, not literally...) the work does go quickly, and it is kind of fun. One can find some strange stuff out there on the highway, and the conversation and treats afterward are worth the effort.

I am curious how many folks made it to the San Luis Club show at the Cayucos Vets' Hall on the weekend of June 15. It was a fine little show (more inside.) They keep getting better! And I hope that applies to all our of members. If you are sick, keep getting better, and if you are well, you better stay that way!



Sunshine

Everybody who has been ill seems to have recovered well. We don't know of anyone being ill right now-Good work, Guys! Keep well!

June Semi-annual Meeting & Picnic

By Debbie Hood

On June 8 the day dawned bright and clear and warm as we met at the junction of 101 & 166 to

caravan out to the Porter Ranch for our semi-annual meeting and barbeque. This was our first time having our meeting at this site, although there was a previous fieldtrip out there. This is a working ranch with cattle, vineyards and vegetable fields. It is owned by Ike Porter who is a direct descendant of Isaac Sparks (1800 to 1867), an early settler in this area and contemporary of Captain Dana, who wrote *Three years Before The Mast*, and whose adobe house still stands in Nipomo.

Mr. Porter joined us for the barbeque and seemed to have a fine time eating the great food everybody brought, along with the wonderful meat and garlic bread that Wes Lingerfelt and his crew prepared.



Truman Burgess tending the meat!

We had an anxious moment or two when Pat McKay, Keith's mother, became ill. Bob Bullock and Debbie Hood were loading her up to take her down to Marion when she started feeling better after having gotten some fluids and a bit of sugar in her. The weather was warm, but not scorching, but you can easily become dehydrated if you do not pay attention to your need for fluids in hot weather. With that crisis averted, we all had a great time...(well Mike Henson maybe wasn't too

thrilled about the bee that was courting him), ate well, and enjoyed visiting with one another,





Mike Henson and Donna Leahman, et al.

as well a spirited silent auction that made \$64.50 for our general fund.



Some of the "goodies" in the Silent Auction.

Soon it was time to clean up, pack up, and go to the rock pile.



Sharon Duncan and Debbie Hood hunting diligently.

At one time there was an active business producing gravel and assorted graded stone. However the EPA regulated it out of business, and we were allowed to pick through the rock piles for whatever we could find. We particularly wanted to find more of the rock he found the last time we had a field trip here... a dark green stone with rounded yellow balls in it as well as some flecks of gold. But luck wasn't with him this time. A few stones went into collecting buckets, and it was time to head for home after a nearly perfect day.

A Fine Little Show

Wayne Mills, OMS

On Saturday, June 15, a friend and I made it to the San Luis Obispo Rockhounds bi-annual gem show at the Cayucos Vets' Hall. The show seemed to be well attended, and had many familiar dealers plus some new ones. I understand that Kim Noyes organized this show as well as the Santa Lucia club show that was held in May of this year. You can see Kim's many excellent pictures of the show and some of the fine specimens that were for sale there on Kim's Rock Blog Eclectic Arcana:

<http://eclecticarcana.blogspot.com/2013/06/53rd-annual-cayucos-gem-mineral-show.html>

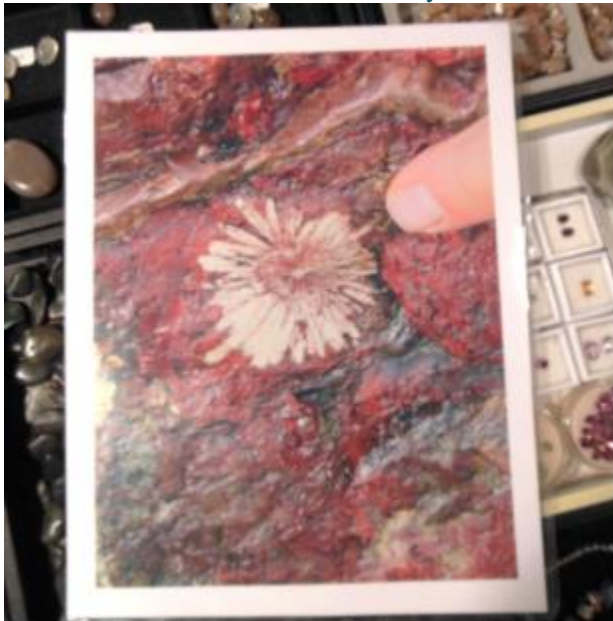
For those folks who don't have access to the internet, here are a couple of pictures I took.



See if you can spot a couple of our members in this one. (Magnification offered by accessing our on line version might help.) Needless to say, OMS supports our sister clubs. I really believe that several dealers actually LOVE our Sandy Berthelot who often patronizes them (in a good way.)

The next pictures show a Chrysanthemum stone-like inclusion that dealer Keith Olivas found in a jasper

boulder in a Northern California river. I had never heard of this feature in a sedimentary rock before.



But maybe the jasper had undergone some regional metamorphism. At any rate, Keith informs me that the unusual rock is for sale.



Here are a couple of the friendly SLO Club ladies (Bonnie Grant (Bonart) right.& Leslie Nelson (Raea Gems) on the left) in one of the Vets' Hall's new rooms opened up for this year's show.

All in all, it was a pleasant part of a leisurely drive up the coast. We even got in a little rock hounding in San Simeon Creek.

Birthdays & Anniversaries



Birthday greetings go out to those who are having birthdays in July: Joellen Chrones, Laura Gebhart, Mike Henson, & Carl Tapper. Happy Birthday to all of you & many more!



There are no members celebrating an anniversary in July, I guess everybody is always on vacation this time of year.

If you don't see your name here when you should, then the information is not in the Red Book. Please write it down and give it to Wes Lingerfelt to get it updated.

Rock Breakfast

The June breakfast was on the 22 not the 29th as your Editor erroneously had it in the newsletter, but that did not stop the 16 hardy souls who remembered that the breakfast is on the 4th Saturday of every month (*not the last Saturday, as 5 week months will trip you up every time.*)

The food was great and everybody was treated to Jeannie Lingerfelt's latest wire wrap goody- a druzey ocean jasper, and Lucky Virgin's latest sphere.

From Wikipedia, the free encyclopedia

Lapis lazuli



A polished specimen of lapis lazuli.

General

Category	Rock
Formula (repeating unit)	mixture of minerals

Identification

Color	Blue , mottled with white calcite and brassy pyrite
Crystal habit	Compact, massive
Crystal system	None, as lapis is a rock. Lazurite , the main constituent, frequently occurs as dodecahedra
Cleavage	None
Fracture	Uneven-Conchoidal
Mohs scale hardness	5–5.5
Luster	dull
Streak	light blue
Specific gravity	2.7–2.9
Refractive index	1.5
Other characteristics	The variations in composition cause a wide variation in the above values.

Lapis lazuli (sometimes abbreviated to **lapis**) is a relatively rare [semi-precious stone](#) that has been prized since [antiquity](#) for its intense [blue](#) color.

Lapis lazuli was being mined in the [Badakhshan](#) province of [Afghanistan](#) as early as the 3rd millennium BC, and there are sources that are found as far east as in the region around [Lake Baikal](#) in [Siberia](#)¹. Trade in the stone is ancient enough for lapis [jewelry](#) to have been found at [Predynastic Egyptian](#) and [ancient Sumerian](#) sites, and as lapis beads at [neolithic](#) burials in [Mehrgarh](#), the [Caucasus](#), and even as far from Afghanistan as [Mauritania](#).

Description

Lapis lazuli is a [rock](#), largely formed from the [mineral lazurite](#). The main component of lapis lazuli is lazurite (25% to 40%), a [feldspathoid silicate mineral](#) with the formula $(\text{Na,Ca})_8(\text{AlSiO}_4)_6(\text{S,SO}_4,\text{Cl})_{1-2}$. Most lapis lazuli also contains [calcite](#) (white), [sodalite](#) (blue), and [pyrite](#) (metallic yellow). Other possible constituents: [augite](#); [diopside](#); [enstatite](#); [mica](#); [hauynite](#); [hornblende](#), and [nosean](#). Some lapis lazuli contains trace amounts of the sulfur-rich [löllingite](#) variety *geyerite*.

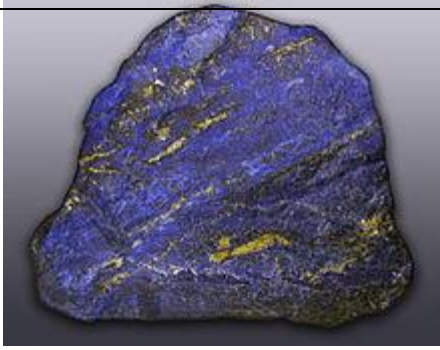
Lapis lazuli usually occurs in crystalline [marble](#) as a result of [contact metamorphism](#).

Etymology *Lapis* is the [Latin](#) word for "stone" and *lazuli* is the [genitive](#) form of the [Medieval Latin](#) *lazulum*, which is taken from the [Arabic](#) *lāzaward*, itself from the [Persian](#) *lāzaward*, the name of a place where lapis lazuli was mined. Taken as a whole, *lapis lazuli* means "stone of Lāzward".

The name of the place came to be associated with the stone mined there and, eventually, with its color. The [French](#) *azur*, the [Italian](#) *azzurro*, the [Polish](#) *lazur*, [Romanian](#) *azur* and *azuriu*, and the [Portuguese](#) and [Spanish](#) *azul*, [Hungarian](#) *azúr* are [cognates](#).

Sources

Lapis lazuli is found in limestone in the [Kokcha River](#) valley of [Badakhshan](#) province in northeastern [Afghanistan](#), where the [Sar-e-Sang](#) mine deposits have been worked for more than 6,000 years. Afghanistan was the



source of lapis for the ancient Egyptian and Mesopotamian civilizations, as well as the later Greeks and Romans.

During the height of the [Indus valley civilization](#) about 2000 BC, the Harappan colony now known as [Shortugai](#) was established near the lapis mines.

In addition to the Afghan deposits, lapis has been extracted for many years in the [Andes](#) (near [Ovalle, Chile](#)), the **Lapis lazuli specimen (rough), Afghanistan** [Lake Baikal](#) region of [Russia](#); [Siberia](#); [Angola](#); [Argentina](#); [Burma](#); [Pakistan](#); [Canada](#); [India](#); and in the [USA](#) in [California](#) and [Colorado](#).

Alternatives

Lapis lazuli is commercially "synthesized" (actually simulated) by the [Gilson process](#), using artificial [ultramarine](#) and [hydrous zinc phosphates](#). It may be substituted by [spinel](#) or [sodalite](#), or by dyed [jasper](#) or [howlite](#).

Uses

Lapis takes an excellent polish and can be made into jewelry, carvings, boxes, [mosaics](#), ornaments, and vases. It was also ground and processed to make the [pigment ultramarine](#) for [tempera](#) paint and, more rarely, [oil paint](#). Its usage as a pigment in oil paint ended in the early 19th century when a chemically identical synthetic variety, often called French ultramarine, became available.

Historical usage

In ancient Egypt, lapis lazuli was a favorite stone for amulets and ornaments such as [scarabs](#); it was also used in ancient Mesopotamia by the Sumerians, Akkadians, Assyrians, and Babylonians for [seals](#) and jewelry. In the Epic of Gilgamesh; the oldest known story in human history, lapis lazuli is referenced several times. Lapis jewelry has been found at excavations of the [Predynastic Egyptian](#) site [Naqada](#) (3300–3100 BC), and powdered lapis was used as eyeshadow by

[Cleopatra](#). In ancient Mesopotamia, lapis artifacts can be found in great abundance, with many notable examples having been excavated at the 25th-century BC [Statue of Ebih-II](#), discovered in ancient [Mari](#) in [Syria](#), uses lapis lazuli inlays that were imported from as far east as [Afghanistan](#).

In ancient times, lapis lazuli was known as [sapphire](#), which is the name that is used today for the blue [corundum](#) variety sapphire. It has also been used in the [Taj Mahal](#) in India.

Color

The intense blue color is due to the presence of the S_3^- [radical anion](#) in the crystal. An electronic excitation of one electron from the highest doubly filled [molecular orbital](#) (No. 24) into the lowest singly occupied orbital (No. 25) results in a very intense [absorption line](#) at $\lambda_{max} \sim 617$ nm.

Orcutt Mineral Society Board

Meeting at Margaret and Mike Henson's Home, Santa



Maria, CA. June 4, 2013

President Wayne Mills called the meeting to order at 7:01 p.m.

Members present were Wes Lingerfelt, Debbie Hood, Jeannie Lingerfelt, Mike Henson, Elaine Von Achen, Sandy Berthelot, Wayne Mills, and Sharon Duncan. Guests included Paul Berthelot, Renea Sutcliffe and Margaret Henson.

Minutes: Minutes were approved as printed in the June, 2013 newsletter.

Treasurer's report: Wes Lingerfelt gave the treasurer's report. It was accepted as given.

Correspondence: Nothing to report.

Committee Reports:

Abused Children: None

Annual Gem Show: None

Annual December Meeting: None

Breakfast: June's breakfast will be held on the 22nd at Francisco's Country Kitchen, 1701 N. Broadway, Santa Maria, CA. at 9:00 a.m.

Bulletin: The Bulletin has been mailed and is on line.

CFMS: This year's annual CFMS show was held in Ventura from May 31 thru June 2nd. OMS members who attended were Wes & Jeannie

Lingerfelt, Paul & Sandy Berthelot, Jan, Stan & Brenna Ferguson, Don & Sylvia Nasholm and Bill & Jeanne Brown. Everyone reported a good time.

Education: None

Field Trip: July's field trip to be determined.

Highway Clean-up: The next highway clean-up will be held Saturday July 13th.

Members will meet at Highways 101 and 166 on the south east corner at 8:00 a.m.

Library: None

Membership: None

Refreshments: The refreshment for the July General Meeting will be "Cake" donated by Sylvia Nasholm, Joe & Lisa Azevedo, Bonnie Ward and Elaine Von Achen.

Scholarship: Santa Barbara City College sent a thank you for our scholarship donation of \$1,500 which was added to by matching funds of \$700 for a total of \$2,200. With those funds they were able to award between \$140 and \$180 to 13 students for summer Field Mapping Camp. Jeff Meyer, PHD sent the thank you.

Sunshine: Lucky Virgin has been experiencing shortness of breath and has a Doctor's appointment scheduled.

Old Business: June's Barbeque and meeting will be held at Porter Ranch off Highway 166 on the 8th of June. Wes will bring an EZ-up for additional shade. Members will caravan from the South East corner of Highways 101 and 166 meeting at 9:30 a.m.

The Tailgate show held on the 25th of May at the Von Achen Barn in Nipomo was a big success. There were lots of customers and most vendors did well. The Von Achen's provided a hotdog barbeque with potato salad, beans, strawberries and cookies for vendors. Everyone had a good time. Renea Sutcliffe has agreed to run the snack bar this year and attended the board meeting to discuss the ideas she has for food and for service. She had questions as to pricing and the amounts of food/supplies she should buy. It has been decided that the kitchen will be open from 10 to 4 on Friday and Saturday and from 9 to 2 on Sunday. Wes Lingerfelt noted that Dale Harwood had been in a car accident and will not attend the show this year. He also reported that he had met with Debbie at the High School and found out that they (Nipomo High School) have no formal program for

student community Service.

There was some discussion regarding the raffle at the show; ways to make it run smoother and ideas will be taken under consideration.

Elaine Von Achen said she has ordered more fabric for table clothes and is planning to order tee-shirts and magnets for the show.

Wes Lingerfelt has some amethyst crystals he will sell to the club for 50 cents each to be used for prizes for the junior's booth.

New Business: None

There will be no meeting in June as we are having the barbeque at Porter Ranch.

The meeting was adjourned by President Wayne Mills at 8:30 p.m.

Respectfully submitted:

Elaine Von Achen

Secretary, OMS

Note: There are no minutes from the semiannual meeting as there was no business to conduct.

Bench Tips

By Brad Smith

SAWING JUMP RINGS - The difficult part of making jump rings for me has always been holding the coil while cutting off the individual rings. I use a saw to get the best fit when closing the rings later. I've seen all sorts of suggestions for ways to hold the coil, but the one that works best for me is this little jig made from scrap wood.

It's about 2 inches wide and 4-5 inches long with a groove cut down its length to cradle the coil of wire and a thin stop attached to the front end.

To cut the rings, thread the saw blade through the coil, hold the coil down in the groove and against the front stop, and saw at about a 40 degree angle.

Don't forget to use some wax or cutting lube. It really does make a difference. If you don't believe me, do an experiment while you're cutting a mess of rings. Count how many rings you cut before breaking a blade, first without lube and then with some every 6-8 rings

TAKE A BETTER PHOTO - Most digital cameras these days have the ability to take a good picture of your small jewelry items, but set-up is important. There are four major items to control:

Background

Lighting
Camera motion
Range of focus

lightly colored papers from an art store make reasonable starter backgrounds. Try experimenting with other products later like glass or colored plastics. Avoid fabrics because the weave can often be distracting at high magnification.

Outside lighting is the easiest. In fact for close-ups, flash never works well. Turn off your camera's flash. Choose a bright but overcast day or a lightly shaded area when the sun is full.

For inside use, two gooseneck desk lamps can be used with 75 watt bulbs. Whatever you use, be sure to set the camera to match the type of lighting you use or else the color will be off.

You'll be shooting up close, so turn on the Macro mode. Now at this range, if the camera moves even a little bit during the shot, the picture will be blurry, so it's essential to use a tripod. Used ones are available inexpensively from eBay, yard sales or some camera shops. And even with a tripod, I put the camera on the self-timer mode so that any vibration from when you click the button settles down before the camera takes a picture.

In order to get the largest part of your jewelry in focus, you have to close the lens down to the minimum aperture (highest F-Stop number). This is done by taking the camera off of "Auto" mode and selecting Aperture Priority, usually denoted by "Av" and then setting the aperture to the largest number, F-8 on my camera. You'll probably have to get out the book or go back to the store to ask about this, but it's really worth it.

That's it. In recap, here are the camera settings I use:

- Set the lens to Macro for a close-up shot.
- Move the camera in close enough for the item to cover at least ¾ of the frame.
- Look for adverse reflections from the jewelry surface.
- Try to minimize reflections with changes of light position, camera angle or white background paper.
- Carefully check for any fingerprints or dust that might be on the piece.
- Make any final tweaks with light and arrangement.
- Turn the camera's flash off.

- Select "Av" for aperture priority mode.
- Set the lens opening to the highest number for max depth of field.
- Set the lighting to match what you're using (daylight, overcast, light bulb, fluorescent, etc.).
- Set the timer to delayed shooting, either 2 seconds or 10 seconds, to avoid camera movement. The delay also gives you time to hold up a piece of white paper to reduce any final reflections.
- Take the shot.

Bench Tips by Brad Smith are at [facebook.com/BenchTips/](https://www.facebook.com/BenchTips/) or [yahoogroups.com/group/BenchTips/](https://www.yahoo.com/groups/BenchTips/)

July 2013 Calendar	
Tuesday July 2, 2013 7:00 to 8:00 pm	OMS Board Meeting- At the home of the Hansen's. All members are welcome at this business meeting. For information or directions please call Mike at 934-1308.
Saturday, July 9, 2013	OMS General Meeting- •Program: •Display: 1' x 1" Display-anything goes. •Refreshments: Cake
Saturday July 13, 2013 8:00 am till done	Highway cleanup- 8:00 AM @ 101/166 East. Refreshments afterward at Francisco's Country Kitchen. For Information call Wes Lingerfelt at 929-3788.
Saturday July 27, 2013 9:00 to 10:00 am	OMS Monthly Breakfast- The Girl's Restaurant, 1237 E. Grand Ave. Arroyo Grande.
46th Rainbow Of Gems Show	
Wednesday July 31, 2013 9:00 am till complete	Show mark up of parking lot for tailgate spaces, etc. We can use help from folks of all ability levels here.
August 2013 Calendar	
Thursday August 1, 2013 8:00 a.m. till complete	Show set up at Nipomo High School at 525 N. Thompson Ave. Nipomo. All members are cordially invited to help skirt and otherwise set up for the show!
Friday, Saturday & Sunday August 2, 3 & 4, 2013 9:00 a.m. to	OMS Rainbow of Gems Show Post show victory dinner 7:00 p.m. at the Golden Dragon Restaurant,

5:00 p.m.	151 Dana St. Nipomo
Tuesday August 6, 2013 7:00 to 800 pm	OMS Board Meeting at the Henson's home. All members are welcome. For information or directions call Mike at 934-1308
Tuesday August 13, 2013 7:00 p.m. to 9:00 p.m.	OMS General Meeting Luis Oasis Senior Center 420 Soares Ave, Old Orcutt. •Program- Show Recap, slides from show •Display- Treasures from the Show •Refreshments-Cookies
Saturday, August 24, 2013 9:00 to 10:00 am	OMS Monthly Breakfast- The Sunset Grill at 1424 Fairway Drive, Santa Maria

CFMS Show Schedule 2013

JULY 2013

July 13 - 14: CULVER CITY, CA Culver City Rock & Mineral Club Culver City Veterans Memorial Auditorium 4117 Overland Avenue Hours: Sat 10 - 6; Sun 10 - 5 Contact: Rick Shaffer, (310) 391-8429 Email: info@culvercityrocks.org Website: www.culvercityrocks.org

AUGUST 2013

August 30 - September 2: FORT BRAGG, CA Mendocino Coast Gem & Mineral Society Town Hall Corner of Main & Laurel Hours: Fri-Sun 10 - 6; Mon 10 - 4 Contact: Jerry Sommer, (707) 937-1833

SEPTEMBER 2013

September 28 - 29: LODI, CA Stockton Lapidary & Mineral Club Lodi Grape Festival Grounds 413 East Lockford Street Hours: 10 - 5 daily Contact: Jerold Kyle, (209) 368-9411 Email: jeroldkyle@yahoo.com Website: www.stocktonlapidary.com

September 28 - 29: MONTEREY, CA Carmel Valley Gem & Mineral Society Monterey Fairgrounds 2004 Fairgrounds Road Hours: Sat 10 - 6; Sun 10 - 5 Contact: Janis Rovetti, (831) 372-1311 Email: janis12@sbcglobal.net Website: www.cvgms.org

September 28 - 29: SANTA ROSA, CA Santa Rosa Mineral & Gem Society Wells Fargo Center for the Art 50 Mark West Springs Road Hours: Sat. 10 - 6; Sun 10 - 5 Jolene Coon, (707) 849-9551 Email: Jolene@SRMGS.org Website: www.srmgs.org

CFMS NEWSLETTER SUBSCRIPTIONS

The CFMS Newsletter is published 11 times a year by the California Federation of Mineralogical Societies, PO Box 1657 Rialto, CA 92377-1657. Subscription: \$5.50 per year, January through December. Not Prorated.

Copyright 2013 Orcutt Mineral Society. Material in this newsletter may be duplicated provided that credit is given this publication and the author(s). For commercial use, the individual author(s) must be contacted. Editor may be contacted c/o OMS, P.O. Box 106, Santa Maria, Ca. 93456-0106, or via club web site.

OMS Webmaster - Wes Lingerfelt - (805) 929-3788.

Check out our OMS web site at <http://www.omsinc.org> or send e-mail to info@omsinc.org.

OMS Membership \$24.00 for Individual, \$34.00 per couple, \$5.00 Each Additional Family Member, \$5.00 Juniors under age of 18, \$10.00 one-time initiation fee for new members. Membership Chairperson is Elaine Von Achen (805) 929-1488.

2013-OMS Officers

Pres.	Wayne Mills	(805)481-3495
Pres. Elect	Sharon Duncan	(805) 478-9359
Secretary	Elaine Von Achen	(805) 929-1488
Treasurer	Wes Lingerfelt	(805) 929-3788
Immed. Past Pres.	Debbie Hood	(805) 481-6860
Federation. Rep.	Wes Lingerfelt	(805) 929-3788

2013- OMS Board Members

Jeannie Lingerfelt	(805) 929-3788
Jan Ferguson	(805) 474-9977
Sandy Berthelot	(805) 349-3977
Mike Schmidt	(805) 260-3741
Mike Henson	(805) 934-1308

Orcutt Mineral Society, Inc.
 PO Box 106
 Santa Maria, CA. 93456-0106

ADDRESS CORRECTION REQUESTED



ORE-CUTTS (named after, William Orcutt) was published in 1966. Member Helen Azevedo was the first editor

Orcutt Mineral Society was founded in 1958, and was named after William Orcutt, a geologist and Civil engineer who worked in the Santa Maria Valley as a District manager for Union oil Company in 1888. In 1889, William Orcutt discovered the mineral and fossil wealth of the La Brea Tar Pits on the property of Captain Alan Hancock. The La Brea Tar Pits are one of the most significant fossil finds in paleontological history. The OMS is a non-profit club dedicated to stimulating an interest in the earth sciences. The club offers educational programs, field trips, offers educational programs, field trips, scholarships, and other opportunities for families and individuals to pursue an interest in the collecting and treatment of lapidary materials, fossils, gems, minerals, and other facets of the Earth Sciences. In addition, another goal of this Society is to promote good fellowship, and proper ethics in pursuit of the Society's endeavors. Operating Rules have been set forth to guide the Officers and members of the Society in accomplishing these aims. Affiliations of the OMS include American Federation of Mineral Societies, and California Federation of Mineral Societies



Happy 4th of July!



OMS Editor

Debbie Hood	(805) 481-6860	debihood1@sbcglobal.net
-------------	----------------	----------------------------------------------------------------------