



Birthdays

Glenda Reeves
February 8th

Jan Ferguson
February 16th

Alexis Van Natta
February 20th

Cary Holst
February 23rd

Anniversaries

There are no anniversaries this month.

Who is Bringing Snacks?

February is Pie! Jeannie Lingerfelt, Jan Ferguson, and Debbie Evans have all signed up to bring pie. Thank you very much.

We need a little help for July and October. Only Margaret Henson has signed up for those months. If you haven't signed up. Please talk to Lisa.

The Prez Box - February 2025



Greetings,

As we start a new month, I wanted to take a moment to connect with all of you and share some thoughts and updates about our club. I must begin by expressing my sincere regret for having to miss the next two general meetings. However, I will still be at the next two board meetings and I will be able to write up the agendas. This just happens to be my time to travel. Yet, I am glad we have experienced members ready to fill in and be there to lead when needed.

Highlights of the Month

- Trip to my old club's gem show: The Tule Gem and Mineral Society had their annual gem show in Exeter, Ca. I was impressed by how they are finally expanding their number of dealers. And I was happy to talk to dealers about our show in August.
- Club Workshop: The workshop continues to develop, and I was really happy to see how well my cabochons turned out with the groove on the edge (using the little grinder machine). I will share some time soon about how well it helps for wire wrapping your stones.
- Field trips are coming and workshop times as well. We will let you know at the meetings and in the newsletters about upcoming events.
- Monthly General Meeting: Our next general meeting will be held on Feb. 11, where we will discuss upcoming

Continued on Page 2

February 2025

February 3 at 7:00 pm - Board Meeting in Wes Lingerfelt's Garden

February 11 at 7:00pm - General Meeting at the Oasis Senior Center.

MEMBERSHIP DUES

Program: National Park Video
Display: Sedimentary Rock or Whatever you Like

February - Field Trip TBD

March 2025

March 3 at 7:00 pm - Board Meeting in Wes Lingerfelt's Garden

March 8 at 8:00 am - Highway Clean-up at the Southeast corner of Highway 101 and 166E. Breakfast to follow.

March 11 at 7:00pm - General Meeting at the Oasis Senior Center.

MEMBERSHIP DUES

Program: Dave Machin presents the Petersen Rock Garden in Oregon

Display: Volcanic Rocks such as scoria or obsidian. The Petersen Rock Garden was constructed entirely from local Oregon rocks.

March - Field Trip TBD

Continued from Page 1

projects, share recent findings, and enjoy a presentation from Wes Lingerfelt about our National Parks.

To our new members, welcome to the Rock Club! We are thrilled to have you with us and look forward to your contributions. Please do not hesitate to reach out to any of our experienced members if you have questions or need guidance. Our club thrives on the exchange of knowledge and the shared joy of discovery.

Thank you for your understanding and support, and I look forward to seeing you.

Warm regards,
Joe Gliebe-Goetz - OMS president



Photo From AmusingPlanet.com

The Luray Caverns Stalacpipe

By Tara Machin

Here is an item for your rock hunter's bucket list, The Luray Caverns Stalacpipe. No, that is not a typo. There is literally an organ inside of the caverns that is played by vibrating stalagmites and stalactites inside the Luray cavern system. I just watched an amazing video on this and I just had to share it with you.

Continued on Page 3

Continued from Page 2

Photo From AmusingPlanet.com

Luray Caverns are located in Luray, Virginia. Luray is a little outside of the Shenandoah National Park on the way to Washington D. C. off Route 211. Before it was known for many caverns, it was known for just one. That one cavern was discovered in 1878 by five local men who were curious about a sink hole in the area. Once inside they found an impressive array of stalagmites and stalactites along with skeletons from the local indigenous tribe. They found human bones embedded in calcite along with other artifacts.

By 1881 the Luray Caverns had lighting installed so that people could visit. There were 13 lights powered by a steam engine to illuminate the way through wooden walkways. In 1901, as with most cave history, the caverns served as a sort of sanitarium. The cool air from the caves was thought to be pure air and was piped from underground into a specialty built building. If nothing else, it was at least the first air conditioning in the area. In the 1950s a bustle of activity started inside the caves. The wood walkways were replaced with pavement and the organ was installed in 1954.

The Great Stalacpipe Organ was invented by Leland Sprinkle. He noticed that different tones could be played on the stalagmites and stalactites when they were struck by a rubber hammer or mallet. He got permission from the cave owner to build the organ and it took him three years to complete it. He tapped hundreds if not thousands of calcite formations to find the correct harmonics for his organ. Some of the speleothems were not quite right in tone so he cut them off to tune them. Periodically, this tuning occurs to this day. The organ is officially called a lithophone and is considered the largest instrument on earth. The organ covers over 3 and a half acres underground. It is more like a percussion instrument than a traditional organ. Slow, precise melodies are the music of choice.

I am sad to have missed this treasure of a geologic oddity, but it will definitely be on my list in the future. Please check out these links for more information.

<https://luraycaverns.com/explore/> - Website for Luray Caverns

<https://www.youtube.com/watch?v=nU7qsaVfn-8> - Musician, Rob Scallon, plays in Luray Caverns

<https://www.youtube.com/watch?v=rkvvcN6rt-l> - First composition written for the Luray Stalacpipe



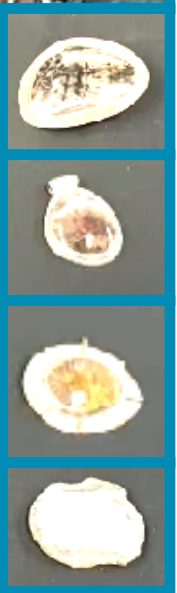
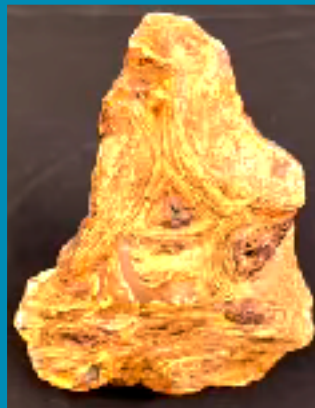


Membership Dues - Pay by March General Meeting

This is a reminder for you to pay your OMS membership dues. Membership is \$24.00 for Individual, \$34.00 per couple, \$5.00 Each Additional Family Member, \$5 for Juniors under age of 18. One time initiation fee for new

members is \$10.00. We will be printing the Red Book in March. If you would like your information to be included, please pay your dues ASAP. Thank you very much!

Displays from the January General Meeting





Road Trip Destination - Zuhl Museum

Looking for a rock related road trip? Travel to the New Mexico State University in Las Cruces, NM and visit the Zuhl Museum. They have some truly amazingly big specimens of petrified wood.

Herb Zuhl took an interest in petrified wood in 1970 and collected petrified wood from all over the world until his death in 2016. His collection of over 1800 specimens was gifted to NM State University.

Admission is free! Check it out zuhlmuseum.nmsu.edu



Upcoming Rock and Mineral Shows

February 15-16, 2025 - Antioch, CA

Antioch Lapidary Club

Website: <http://antiochlapidaryclub.com>

February 22-23, 2025 - Vallejo, CA

Vallejo Gem and Mineral Society

Contact: (415) 254-1506

Website: <http://vjgems.com>

March 1-2, 2025 - Ventura, CA

Ventura Gem and Mineral Society

parking if using the Fairgrounds lot.

Contact: (805) 312-8467, info@vgms.org

Website: <http://www.vgms.org>

March 8-9, 2025 - Turlock, CA

Mother Lode Mineral Society

Website: www.turlockgemshow.com

March 7-9, 2025 - Stoddard Wells, CA

Victor Valley Gem and Mineral Club

Website: <http://vvgmc.org>

March 15-16, 2025 - San Jose, CA

Santa Clara Valley Gem & Mineral Society

Website: <http://www.scvgms.org>,

[facebook.com/](https://www.facebook.com/santaclaravalleygem&mineralsociety/)

[santaclaravalleygem&mineralsociety/](https://www.facebook.com/santaclaravalleygem&mineralsociety/)

March 22-23, 2025 - Angels Camp, CA

Calaveras Gem and Mineral Society

Website: <https://calaverasgemandmineral.net/show.html>

March 22-23, 2025 - Torrance, CA

South Bay Lapidary & Mineral Society

Website: [http://](http://southbaylapidaryandmineralsociety.com)

southbaylapidaryandmineralsociety.com

March 21-23, 2025 - Fresno, CA

Fresno Gem and Mineral Society

Website: <https://www.fgms.rocks>

More information can be found on the CFMS website at cfmsinc.org

Need A Red Vest?

Tara collected orders for red vests at the last meeting. Those will be delivered at the February general meeting. If you missed the ordering, contact Tara or you can order your own. The Amazon links are listed below. Renea has the patches for the back of the vest. Thank you.

Women's vest [click here](#)

Men's vest [click here](#)



Photo of the Petrified Wood Gallery at the Zuhl Museum

OMS HIGHWAY HEROES “WIND WALKERS”

Wayne W. Mills, Adopt-A-Highway Chair

Six hardy souls showed up for what several of us thought was the hardest highway clean-up we have done. Morning temperatures were about 50 degrees F, and the winds were gusting up to 100 mph. Trash was not as much the issue as the winds blowing out of the east. Many thanks to Wes and Marty Lingerfelt, Geary Sheffer, Steve and Lisa Siemsen who joined me for the effort, (And I do mean EFFORT!). We collected about 8 bags of trash, and a couple of bags of recyclables.

We began our clean-up about 8:00 am, and were finished about 9:26 am. After our clean-up, we retired to the Mayor’s Place in Nipomo for snacks. Geary Sheffer won the drawing for the incentive prize donated by Wes Lingerfelt, a blue-dyed agate slab from Brazil. We started the new tradition of paying for our meals. Wayne distributed \$10 to each participant, and they ordered and paid for their own drinks and treats. We discussed some of our unusual finds, and moved on to other interesting topics. Some of the unusual finds we made were: a box cutter, a 5/16” box wrench, heavy-duty chock block, dead hawk, dead skunk, USB cord, at least one trucker bomb, and a broken windshield wiper.



OMS Membership

Membership is \$24.00 for Individual, \$34.00 per couple, \$5.00 Each Additional Family Member, \$5 for Juniors under age of 18. One time initiation fee for new members is \$10.00.

OMS Online Contacts

Website	omsinc.org
Email	info@omsinc.org

Copyright 2025 Orcutt Mineral Society. Material in this newsletter may be duplicated provided that credit is given this publication and the author(s). For commercial use, the individual author(s) must be contacted. Editor may be contacted c/o OMS, P.O. Box 106, Santa Maria, Ca. 93456-0106, or via club web site omsinc.org.

Orcutt Mineral Society, Inc.
P.O. Box 106
Santa Maria, CA 93456-0106

ADDRESS CORRECTION REQUESTED

The ORE-CUTTS (named after William Orcutt) was first published in 1966. Member Helen Azevedo was the first editor. The Orcutt Mineral Society was founded in 1958, and was also named after Orcutt who was a geologist and civil engineer who worked in the Santa Maria Valley as a District Manager for Union Oil Company in 1888. In 1889, William Orcutt discovered the mineral and fossil wealth of the La Brea Tar Pits on the property of Captain Alan Hancock in Los Angeles. The La Brea Tar Pits are one of the most significant fossil finds in paleontological history.

OMS is a non-profit organization dedicated to stimulating an interest in the earth sciences. The club offers educational programs, field trips, scholarships, and other opportunities for families and individuals to pursue an interest in the collecting and treatment of lapidary materials, fossils, gems, minerals, and other facets of the Earth Sciences. In addition, another goal of this Society is to promote good fellowship and proper ethics in pursuit of the Society's endeavors. Operating Rules have been set forth to guide the officers and members of the Society in accomplishing these aims. Affiliations of the OMS include American Federation of Mineral Societies, and California Federation of Mineral Societies.

